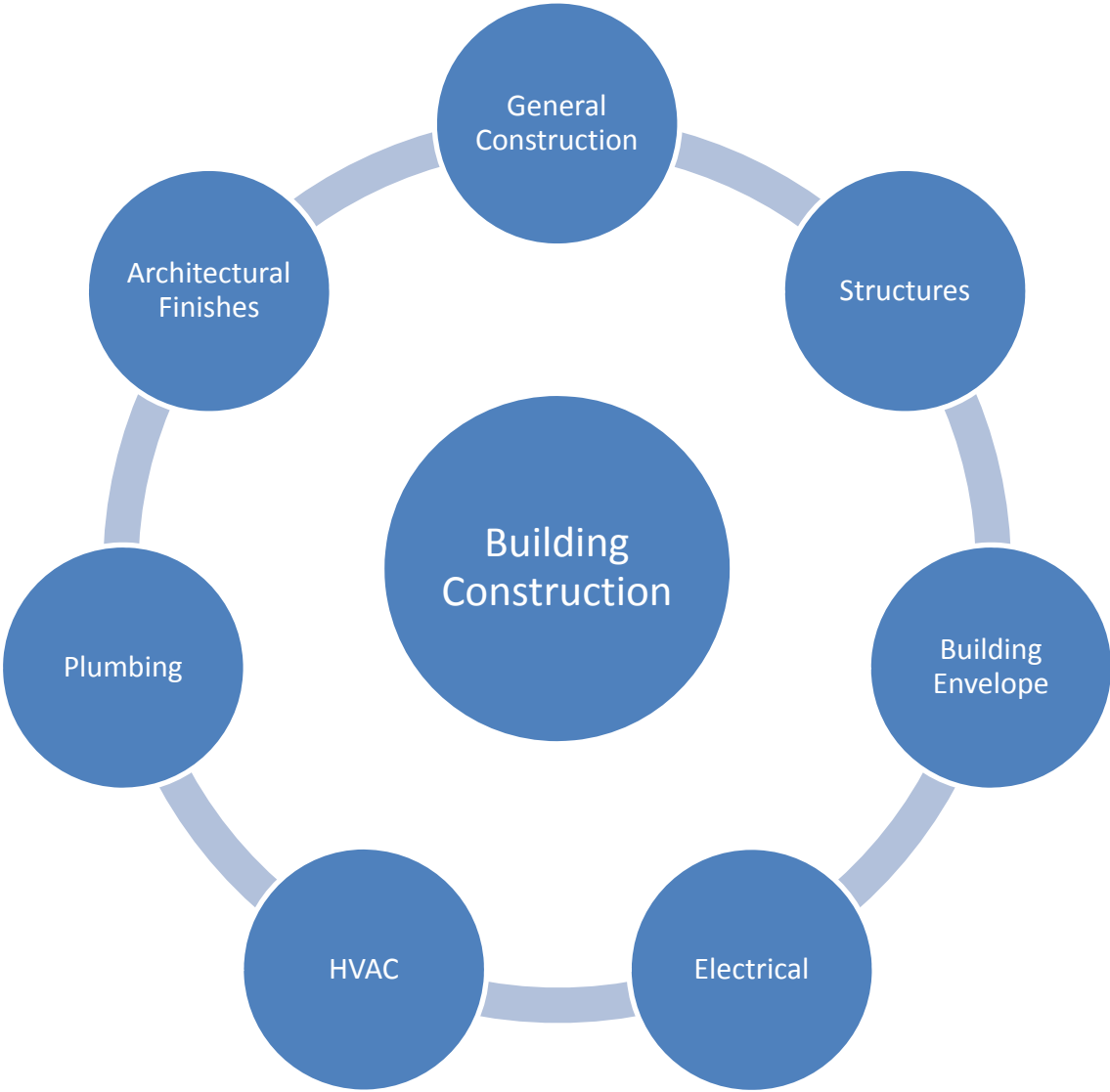
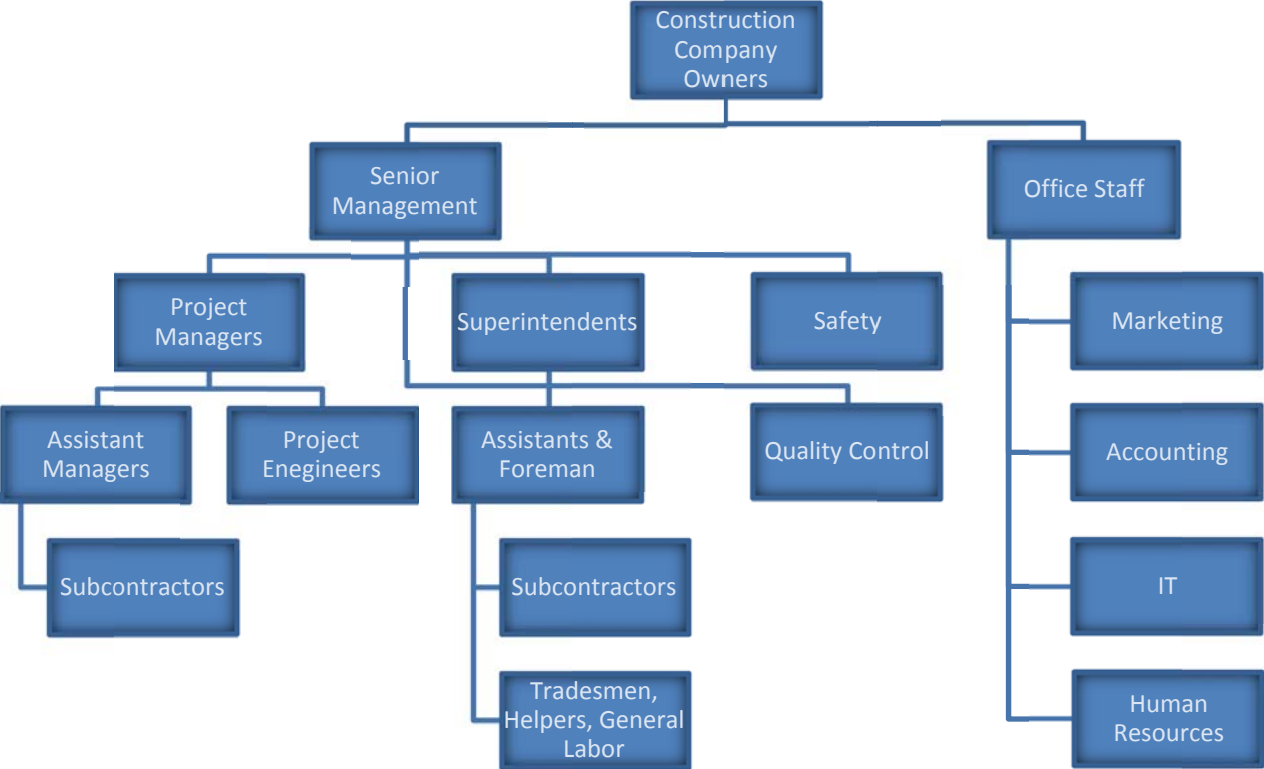


Career Paths in Construction



Common Org Chart in Construction



Common Curriculum for Construction

Construction Math

- Fractions
- Geometry
- Trigonometry

Blueprint Basics

- Plans
- Elevations
- Section Cuts/Details
- Notes
- Line Types
- Symbols
- Schedules
- One Line Diagrams

Layout/Surveying

- Gridlines and Offsets
- Benchmarks
- Radial Layout

Basics of Project Specifications

- CSI Format
- Front Ends
- Parts to the Specifications

Basics of Estimating

- Construction Takeoff
- Unit Pricing
- Production Factors

Basics in Construction Scheduling

- Activities and Durations
- Relationships
- Relationships and Logic
- Work Breakdown Structure & Hammocks
- Project Float

Building Information Modeling (BIM)

- Drafting in 3D
- Clash Detection
- Lazer Scanning

Wage Rates Required on Recent Project

High School No. 8 / Junior High School No. 15
Katy Independent School District

14128/14129

Prevailing Wage Rates - School Construction Trades
Effective – March 2, 2013 through March 1, 2016
Texas Gulf Coast Area

CLASSIFICATION	HOURLY RATE
Asbestos Worker	\$13.00
Bricklayers; Masons	\$17.10
Carpenters/Caseworker	\$15.00
Carpet Layers/Floor Installers	\$13.68
Concrete Finishers	\$14.58
Data Comm / Telecom Installer	\$18.13
Drywall Installers; Ceiling Installers	\$16.73
Electricians	\$17.93
Elevator Mechanics	\$29.89
Fire Proofing Installer	\$14.85
Glaziers	\$16.43
Heavy Equipment Operators	\$15.10
Insulators	\$12.00
Ironworkers	\$19.13
Laborers	\$12.67
Lather / Plasterer	\$17.10
Light Equipment Operators	\$14.50
Metal Building Assemblers	\$14.13
Millwrights	\$21.25
Painters/Wall Covering Installers	\$13.60
Pipefitters	\$22.53
Plumbers	\$21.88
Roofers	\$14.79
Sheet Metal Workers	\$16.47
Sprinkler Fitters	\$20.13
Steel Erector	\$17.38
Terrazzo Workers	\$18.67
Tile Setters	\$18.54
Waterproofers/Caulkers	\$15.10